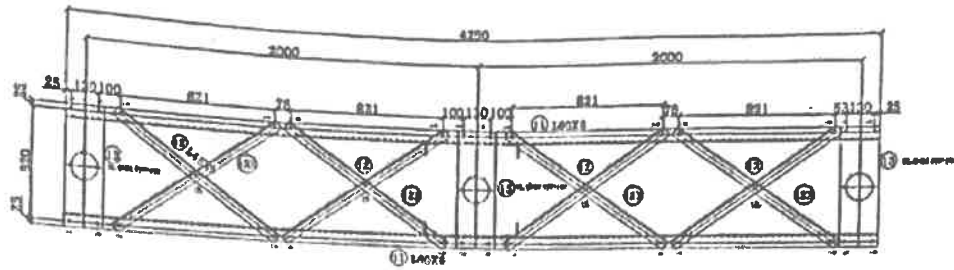
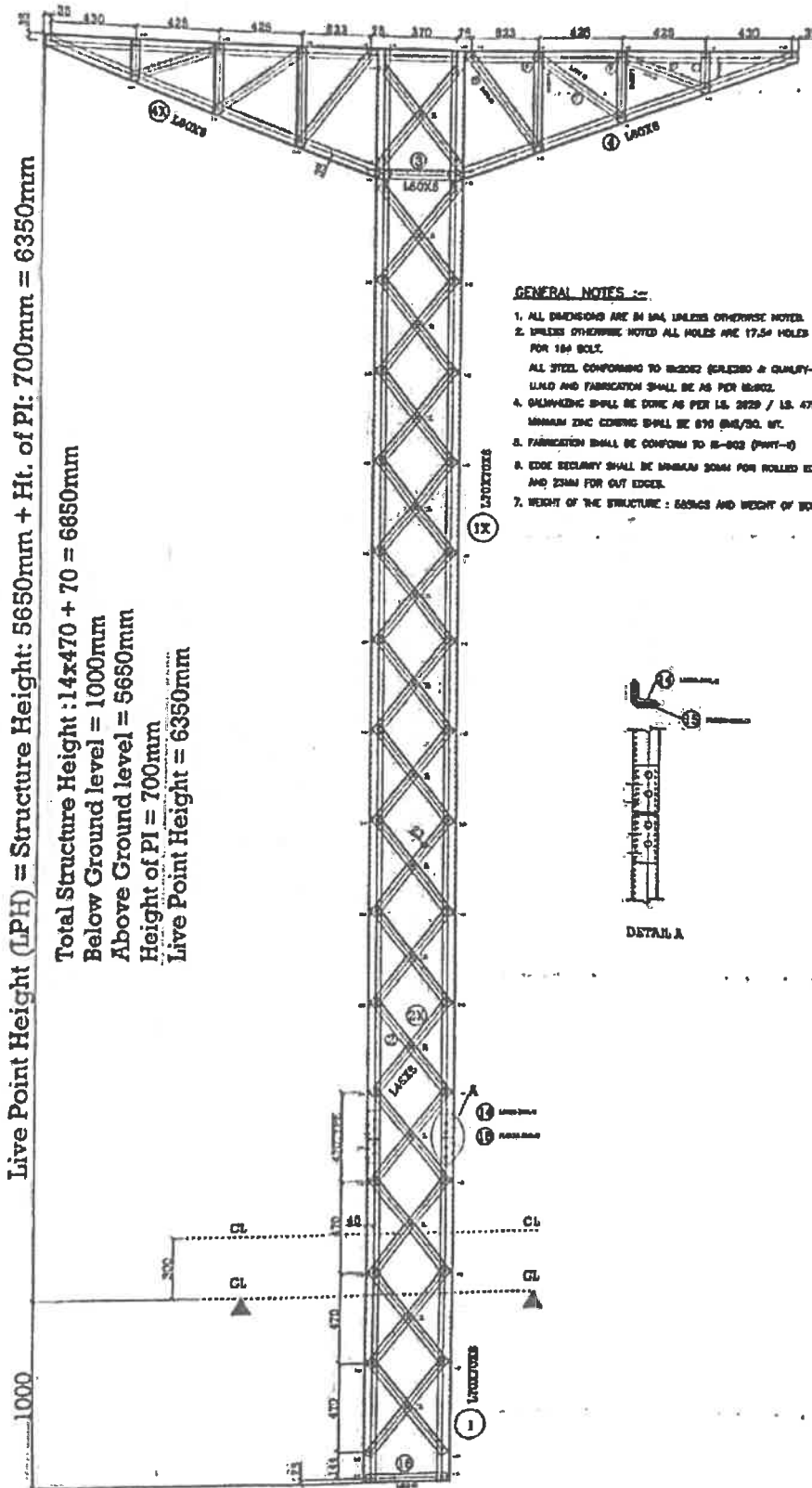


GA Structural drawing for 3-Phase Rigid Bus Structure



TOP VIEW



ELEVATION

Live Point Height (LPH) = Structure Height: 5650mm + Ht. of PI: 700mm = 6350mm

Total Structure Height: 14x470 + 70 = 6650mm

Below Ground level = 1000mm

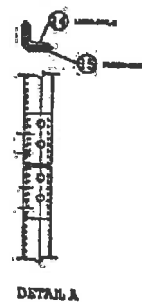
Above Ground level = 5650mm

Height of PI = 700mm

Live Point Height = 6350mm

GENERAL NOTES :-

1. ALL DIMENSIONS ARE IN MM, UNLESS OTHERWISE NOTED.
2. UNLESS OTHERWISE NOTED ALL HOLES ARE 17.54 HOLES FOR 16# BOLT.
3. ALL STEEL CONFORMING TO EN10025 (S235JR & QUALITY-A) AND FABRICATION SHALL BE AS PER EN10025.
4. GALVANIZING SHALL BE DONE AS PER IS: 5829 / IS: 4726. MINIMUM ZINC COATING SHALL BE 675 GMS/30. MT.
5. FABRICATION SHALL BE CONFORM TO IS-803 (PART-1).
6. EDGE DEFLATION SHALL BE MINIMUM 30MM FOR ROLLED EDGE AND 25MM FOR CUT EDGES.
7. WEIGHT OF THE STRUCTURE : BASIC AND WEIGHT OF BOLTS & NUTS SHALL



DETAIL A